

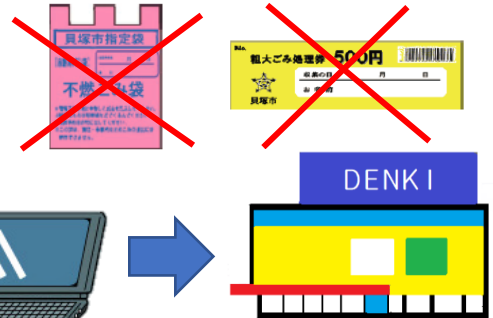
# How to recycle computers , smart phones and mobile phones.

## Computers

Computers and monitors cannot be collected as non-burnable garbage or oversized garbage.

Computers have A / B / C ways to throw them away.

A: Ask the store where you purchased the computer if you can take it to them for recycling.



Items with the computer recycling mark



Desktop computer



Laptop computer

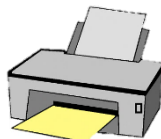
Take the computer to the store where you purchased it.

B: Ask the manufacturer of the computer if you can take it to them for recycling.

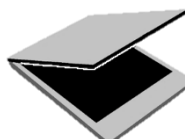
C: If you have made your own computer or you do not know the manufacturer , please contact the PC 3R Promotion Association.

PC 3R Promotion Association 03-5282-7685 <https://www.pc3r.jp/>

Dispose of computer peripherals such as printers and scanners as non-burnable.



Printers



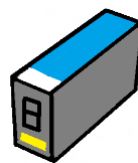
Scanners



Non-burnable garbage bag (pink)

## Ink cartridges

Place used ink cartridges in the 'Ink Cartridge Collection Box' located at the store where you purchased them , City Hall , or community center.



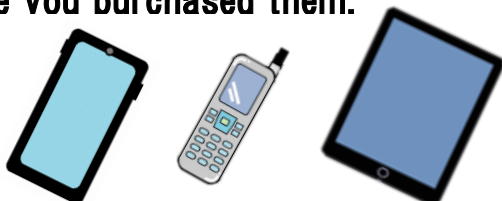
Ink cartridge



Ink Cartridge Collection Box

## Smart phones / Mobile phones / Tablets

Used smart phones , mobile phones , and tablets can be collected at the store where you purchased them.



Smart phones / Mobile phones / Tablets



モバイル・リサイクル・ネットワーク  
※環境省がH16の「リサイクル」に認定済み。

You can take it to a store with a 'Mobile Recycle Network'.

Dispose of small home appliances other than computers (printers , scanners, mobile phones , tablets , etc.) in a non-burnable garbage bag (pink). (Please remove the battery.)



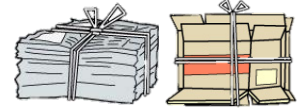
# Recycling newspapers , magazines , cardboard boxes , milk cartons , and old clothes.

Newspapers , magazines , cardboard boxes , milk cartons , and other used paper are collected by your neighborhood association or residents' association.

Please ask your neighbors or the Waste Management Section of the City Hall about collection dates and times for Recyclable Paper Waste.

## Recyclable Paper Waste

Separate newspapers , magazines , books , and cardboard by type and tie them with string.



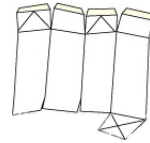
Rinse the milk cartons with water , open them , dry them , and tie them together with a string.



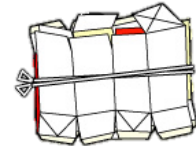
Wash the pack with water



Open the pack



Dry the pack

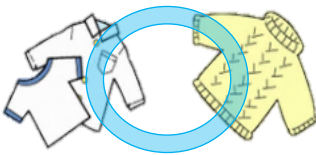


Tie the pack together with string.

## Old clothes , towels

Ask your neighborhood association or neighbors how to collect old clothes and towels.

Dirty old clothes and towels cannot be recycled , so please dispose of them in a combustible garbage.



Please wash old clothes.



Please dispose of dirty old clothes with burnable garbage.



Burnable garbage bag (purple)

## Items that cannot be collected by the City



Fire extinguishers



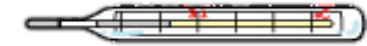
Batteries



Oil heaters



Syringe with Needles



Please bring the mercury-containing thermometer to the Waste Management Division of the City Hall.



Propane gas cylinders



Drums



FRP products  
Surfboards etc.



Kerosene / Motor Oil



Soils / Sand / Stones



Motorcycle and Automobile tires and parts.



Pesticides / Chemicals



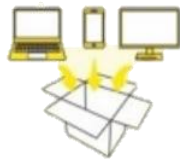
Paints

For items that cannot be collected by the City , please contact the store where you purchased them or the manufacturer to ask how to dispose of the item properly.

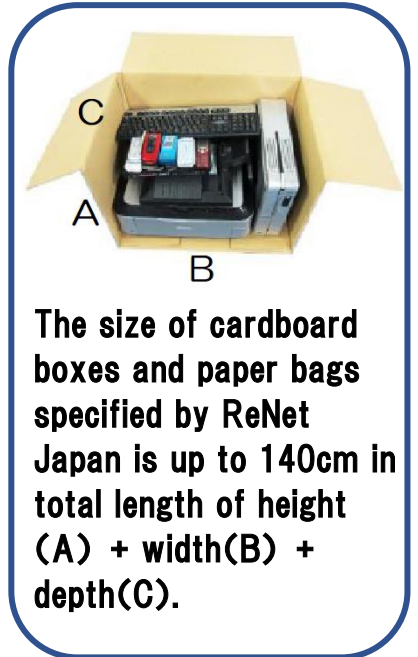
## How to dispose of personal computers and small home appliances (electrical products) a package delivery company.

- ① Apply online to ReNet Japan (computer collection company).
- ② Please package your computer and small home appliances in a cardboard box or paper bag to the size determined by ReNet Japan.
- ③ A courier will come to your home on the scheduled day.
- ④ Hand over the package containing the computer to the courier.

Apply online → Put in the box → Hand over to courier



If you have any questions, please contact ReNet Japan on the Internet or by phone.



ReNet Japan <https://www.renet.jp> 0570-085-800

**Let's throw away the garbage according to the determined rules.**

**Let's clean up the town.**

Discarding garbage on roads, parks, rivers, vacant lots, etc, without following the rules, constitutes illegal dumping and constitutes a crime.

Illegal dumping includes not only unnecessary home appliances (TVs, refrigerators, etc), furniture (chests, chairs, etc), futons, but also empty cans and cigarette litter.



**If you dump garbage illegally, you will be arrested by the police.**